

## Frequently Asked Questions

Q: How many native English-speaking teachers are at the school?

A: More than half of the teachers who are based at the school are English-speaking instructors. Children will spend their days immersed in an all-English environment, where they naturally acquire correct pronunciation and intonation through daily interactions.

Q: Do you provide Japanese language education?

A: Yes. We incorporate elements of Japanese culture into daily activities. Children learn about Japanese manners, greetings, and social behaviors such as cooperation in group settings, helping them build a strong sense of social skills and cultural understanding.

Q: I'm a little worried about whether my child will adapt since this is their first time attending an international school.

A: Please rest assured. Your child will be surrounded by gentle, immersive English from native-speaking teachers, while also receiving attentive care and support from Japanese staff.

This level of support is possible because our school is operated by one of Japan's leading early childhood education companies.

Q: How can parents stay updated on their child's daily activities?

A: We will introduce an ICT system that keeps you informed about your child's daily experiences, while also allowing you to manage attendance, pick-up/drop-off, and various administrative tasks easily and efficiently — all in one place.

Q: Are lunch and school bus services provided?

A: Lunch service is not provided, but we will arrange a lunch delivery service from a catering company.

## Enrollment Now Open!



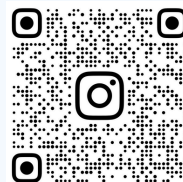
### Online Application Form

Please feel free to contact us — we look forward to hearing from you!



### Instagram

We share snapshots of daily life at our school on Instagram. Be sure to follow us and stay updated on what's happening!



### Event Application Form

You are welcome to experience the English programs offered at our school.

We warmly invite you to join us!

## Access



# ASC International School Urawamisono



Grand Opening in  
April 2026!

株式会社日本保育サービス  
Japan Nursery Service Inc.

# Welcome to Our School

## 【Basic Information】

Name: ASC International School Urawamisono

Address: 1F, Stars Square Urawamisono, 29-2 Nakanoda, Midori-ku, Saitama

Opening Hours: 8:00 AM – 7:00 PM

Closed: Saturdays, Sundays, national holidays, and year-end/New Year holidays

Type: Non-licensed daycare facility

Age Group: Classes for children aged 2 to 5



## 【Courses】

We offer two types of courses, allowing families to choose the one that best fits their needs.

### ① Daycare Course

Children spend the full day at school, learning and growing just like they would in a daycare environment.

- Regular Hours: 8:00 AM – 6:00 PM
- Extended Hours: 6:01 PM – 7:00 PM

### ② Kinder Course

Children spend a half-day at school, similar to a kindergarten program.

- Regular Hours: 9:00 AM – 2:00 PM
- Extended Hours: 8:00 AM – 8:59 AM / 2:01 PM – 7:00 PM

## After-School Program Also Available!

Your child can continue attending even after entering elementary school.

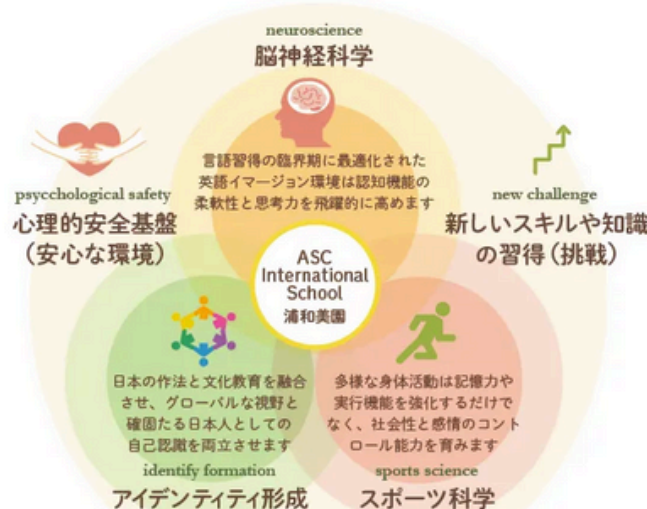


# What Makes Our School Special

～Nurturing Global Leaders Who Will Shape the Future～

Our International School goes beyond mere language learning and aims to foster the overall development of children.

By incorporating an academic approach based on neuroscience, sports, science, and developmental psychology, we provide a safe and challenging environment for children.



- ① Over 60% of our teachers are native speakers, providing children with abundant opportunities to naturally engage with authentic English every day.
- ② Our goal is for children to pass the Eiken Jr. GOLD level by the time they graduate from the program.
- ③ Children can participate in a variety of programs in English, including gymnastics, art, music, and dance.
- ④ We also teach traditional Japanese manners and social skills, helping children develop respect for Japanese culture, etiquette, and values.

# A Day at Our School



8:00

## Early Care

Children greet their teachers and friends with "Good morning" in both English and Japanese, and then enjoy playing together.

9:30

## Circle Time

Children check the calendar and weather, and discuss the day's theme and planned activities together.

11:00

## Outdoor Play

Children enjoy plenty of active playtime, moving their bodies freely on the terrace or at the park.

13:00

## Nap

\* For the Daycare Course only

15:30

## Snack time

16:45

## Closing Circle Time

Children reflect on their day and talk about what they enjoyed and learned. They sing songs in English, prepare for the next day, and say "Goodbye" to their teachers and friends in both English and Japanese before leaving the school one by one.

18:00

## Extended Care

19:00

## Closed

9:00

## Arrival & Free Play

A valuable time when children independently choose their own activities and develop important social skills.

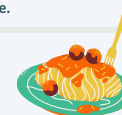
10:00

## Morning Activities

Children participate in age-appropriate learning activities, including English education, gymnastics, music, art, dance, phonics, and letter practice.

12:10

## Lunch Time



14:30

## Afternoon Activities

Children deepen what they learned in the morning through age-appropriate storytime and activities that nurture creativity and self-expression.

16:00

## STEAMS

Through themed projects, we nurture each child's curiosity and love of discovery. They express ideas through art and crafts, join theme-based discussions, and learn to develop critical thinking, problem-solving, and logical reasoning skills.

17:00

## Lesson

- Programming
  - Learning program to prepare for Eiken Jr.
  - English-based activities such as physical exercise and dance
  - Art classes in English, and more
- ※ Examples

